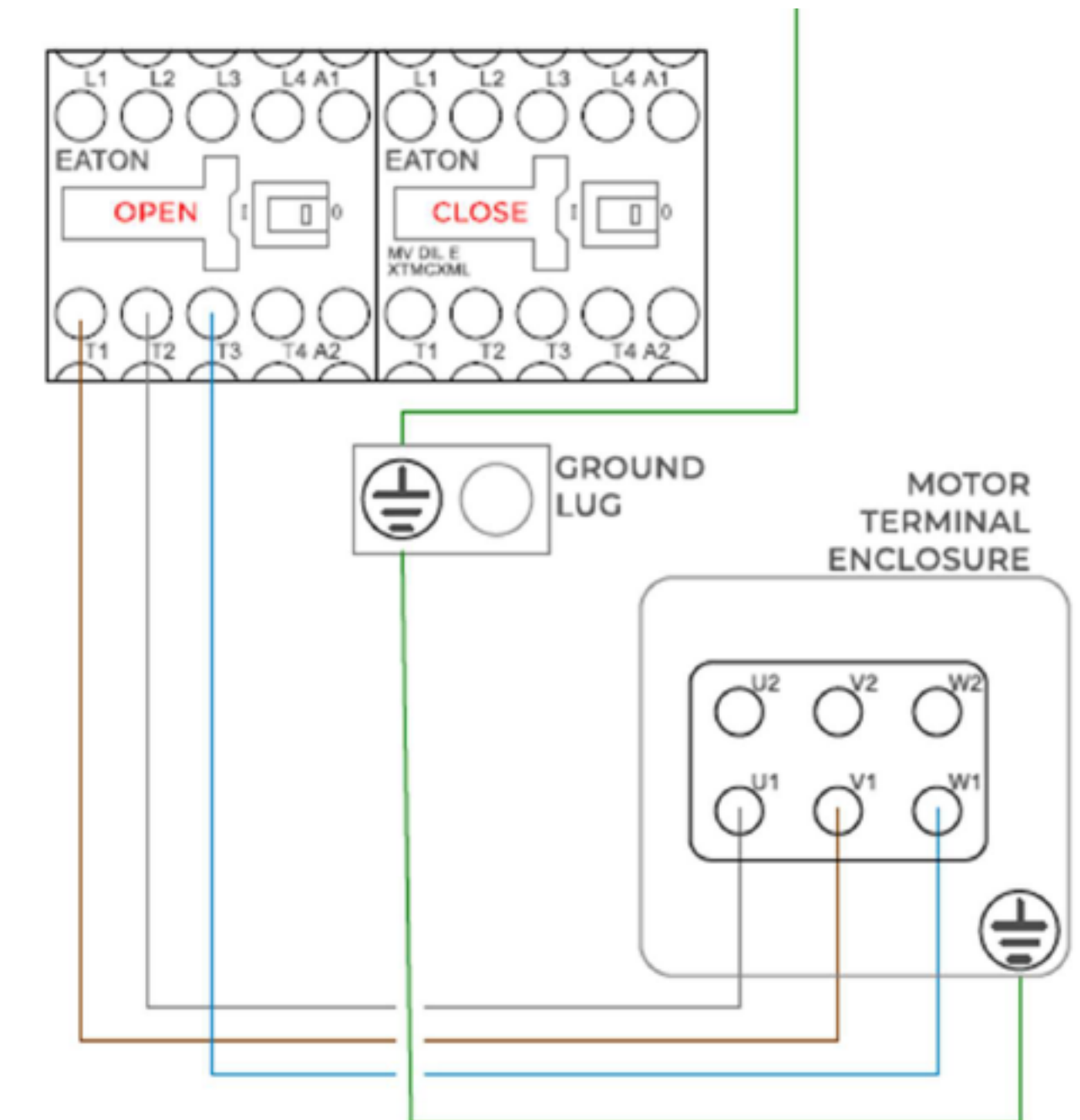
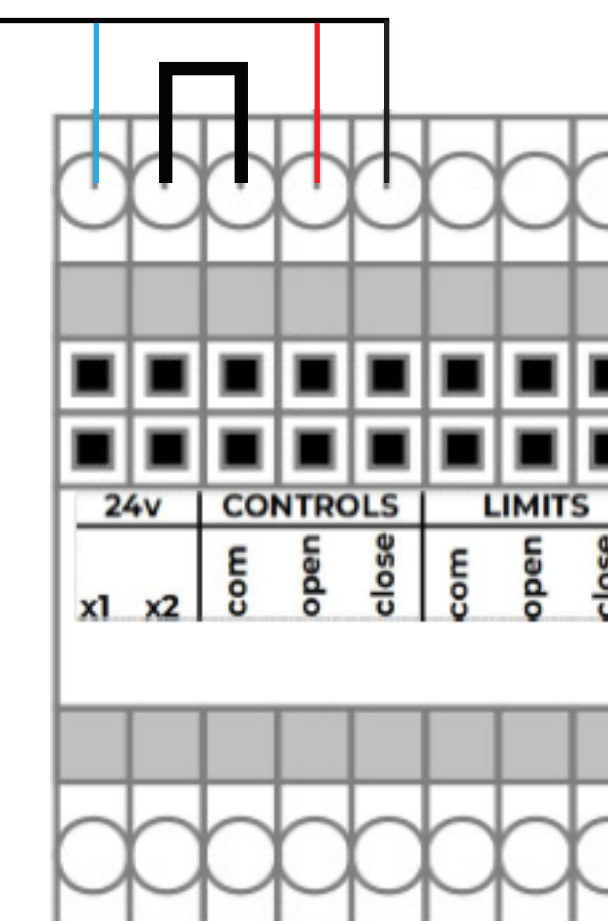
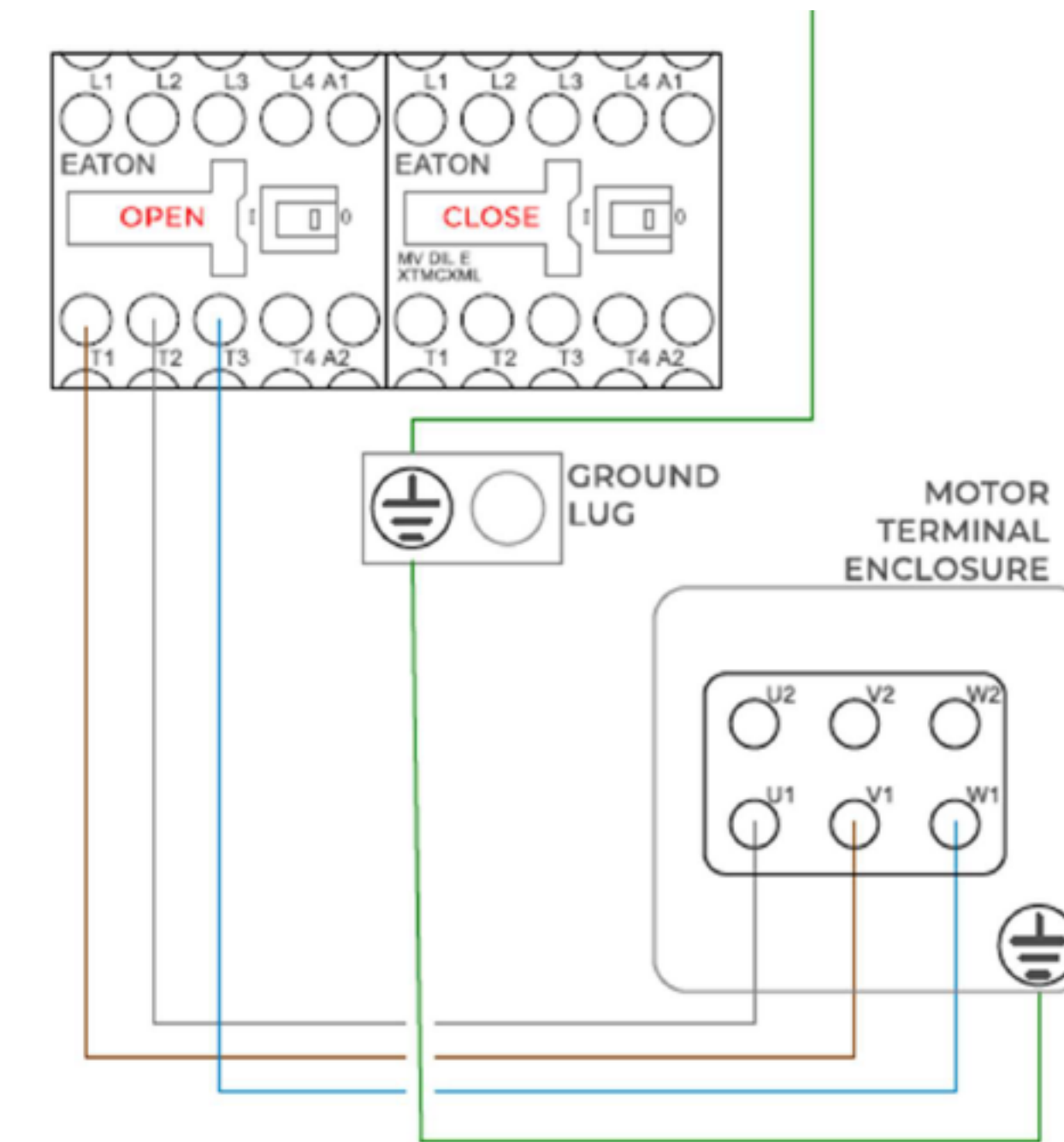
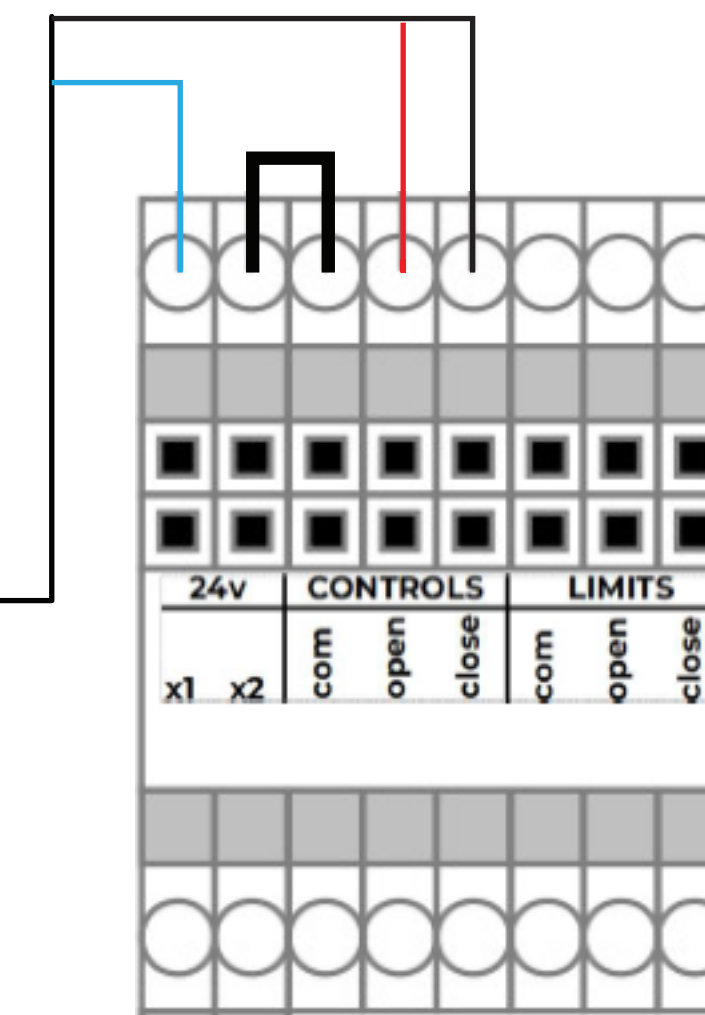
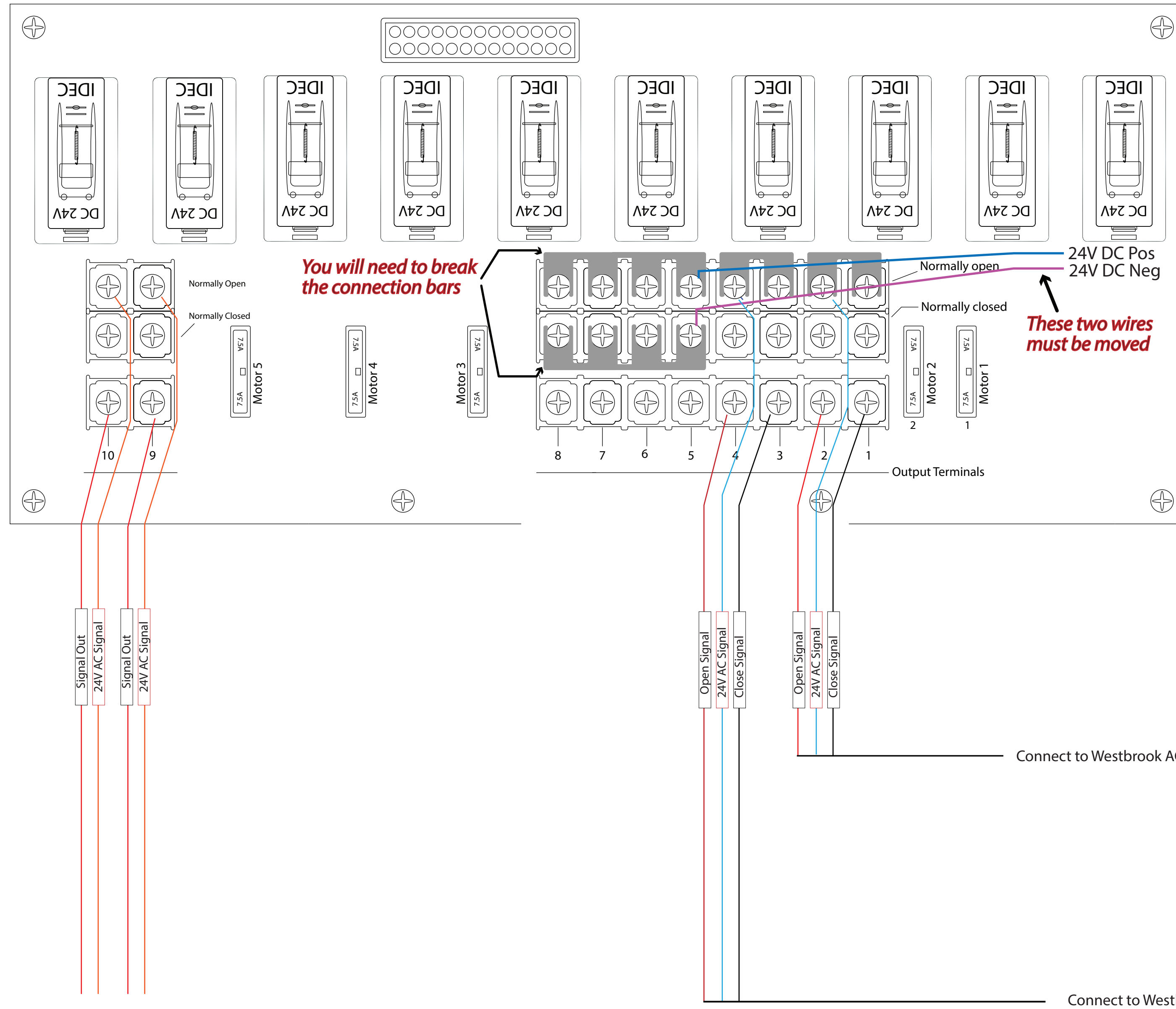


All electrical connections must be made by a qualified, licensed electrician and in accordance with all state and local codes.



The plans provided by Advancing Alternatives are non-engineered drawings due to the wide variety of local codes and climatic conditions. Licensee should have a local electrical engineer, mechanical engineer or builder provide these drawings as may be required for permits and construction. Licensee should have a local architect or licensed engineer review these plans and provide a site-specific electrical design if found necessary. The plans provided by Advancing Alternatives are not stamped or signed by an architect, designer, or engineer. Local building codes, laws, regulations, or departments may require plans to be signed and stamped by an engineer and/or architect. Revisions to the drawings required by local building department or codes are not included as part of the sale. Modifications to a particular plan may be provided by Advancing Alternatives for an additional fee. These drawings provide ideas and concepts and are not intended to be complete in all respects and details.