



**ADVANCING**  
ALTERNATIVES

# ADVANCING ALTERNATIVES

*Innovate. Grow. Advance.*



# SUPPORTING PROFESSIONAL GROWTH

Our specialties include Touchscreen Environmental Controls, Rack & Pinion Motors, Curtain Motors and Natural Ventilation Packages. Our thermally sealed, natural ventilation curtain systems and associated products complement any horticultural/agricultural structure. Our popular Roll Lock Curtain system and our Rack & Pinion System harness the power of natural airflow, empowering our customers to cultivate healthier, more energy-efficient greenhouse operations.

We specialize in providing environmental control systems to suit a variety of greenhouse and horticultural needs. Whether you operate a small high tunnel or an extensive greenhouse range, our natural ventilation solutions are designed to help you create the ideal growing conditions. In addition to our control systems, we offer robust 24 VDC motors for curtain ventilation and rack & pinion systems. These motors are built to withstand the rigorous demands and harsh environmental conditions of farming operations. We also supply a wide array of additional products, including fans, louvers, heaters, and HAF fans that complete an environmental scheme, helping you achieve optimal growing conditions.

## ABOUT US

***Serving Growers with Exceptional Support  
& Innovative Solutions***

For over 25 years, Advancing Alternatives has been a trusted partner to growers and farmers across North America. From our main offices nestled in the heart of Lancaster County, Pennsylvania, we've dedicated ourselves to providing custom solutions and unwavering support, helping cultivate a more efficient and sustainable future for agriculture nationwide.

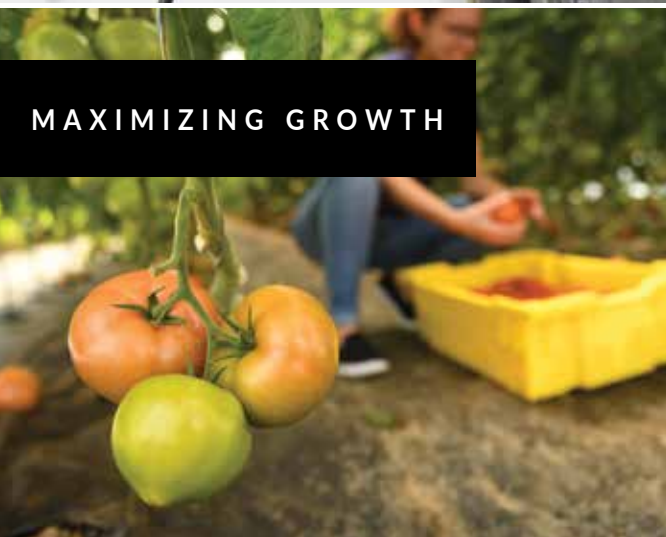
## OUR MISSION

To empower commercial growers with innovative, data-driven solutions that maximize their growing potential and inspire a culture of stewardship.





INNOVATIVE



MAXIMIZING GROWTH



HIGH-QUALITY  
PRODUCTS



CUSTOMER FOCUSED





# GREENHOUSE SOLUTIONS

We provide greenhouse controls and curtain systems engineered to optimize natural air circulation, driving the production of healthier crops, all while maximizing energy efficiency in your greenhouse operations.



## CURTAIN VENTILATION

Our curtain ventilation systems allow for air movement across the width of greenhouses. Natural curtain ventilation provides growers with sustainable options for climate and humidity control, air circulation, and carbon dioxide/oxygen replacement.



## CURTAIN WALLS

Provide convenient product accessibility for customers and create an easier work flow for employees with our curtain walls. Internal curtain walls also allow you to segment your growing space for incremental opening and closing during the season.



## GREENHOUSE COMPONENTS

Whether you're building a new greenhouse or retrofitting an existing greenhouse, we have the components necessary for a successful project. Our innovative aluminum profiles have been designed with both the grower and installer in mind.

---

Be sure to check out all of our greenhouse components at  
***[advancingalternatives.com](http://advancingalternatives.com)***

---



SCRB

**SIDE CLASP ROLL BAR**



RL

**ROLL LOCK**

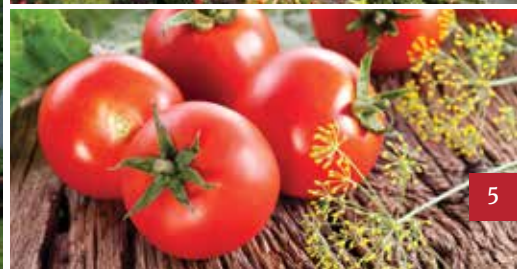


WL

**SINGLE WIRE LOCK BASE**

"We installed our automation system this summer and have had no issues with its functionality. The system was straightforward to install and the programming on our AegisTec+ controller was far simpler than I had anticipated. We're super pleased with this investment; once we had it dialed in, we simply haven't had to touch the controls!"

**MICHAEL HANLON**  
Ypsilanti, MI



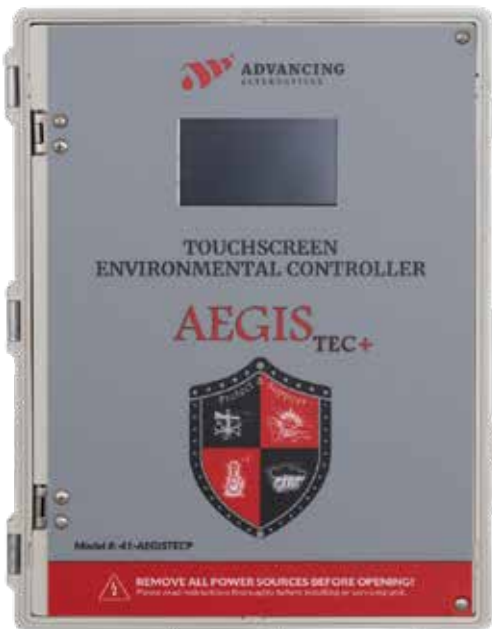


# ENVIRONMENTAL CONTROLLERS

Your crop's health depends on an environmental controller you can truly trust, which is why ours are designed for intuitive programming and direct power to 24-volt DC ventilation drives. Let us design your next project with our environmental controllers, offering advanced touchscreen control for all your cooling, heating, and timed motor operations, complete with essential sensor options for complete crop protection.

Upgrade your ventilation with our environmental controllers.





41-AEGISTECP

### **AEGISTEC PLUS TOUCHSCREEN CONTROLLER**

The AegisTec Plus provides all-in-one touchscreen control with a user-friendly interface, allowing you to connect 24 VDC motors directly without requiring additional motor transformer boxes. Allows for multiple zones, diff periods, timed periods, dehumidification, grow lights, as well as connection to AdvanSync, our online platform, via our Legacy Connect module.

41-ATECP-DC

### **ATECP DC TOUCHSCREEN CONTROLLER**

The ATECP-DC (dry contact) model provides the same options as our AegisTec Plus, without supplying the DC power for Low Voltage Motors. Instead, the box wires to contacts that power AC voltage appliances or to ventilation motor control boxes while saving hardware costs. Allows for connection to AdvanSync, our online platform, via our Legacy Connect module.



41-AEGISTEC

### **AEGISTEC TOUCHSCREEN CONTROLLER**

The AegisTec Environmental Controller is ideal for the optimization of natural ventilation in a single greenhouse or growing zone. Built for the efficient ventilation that a roof vent and sidewall curtains provide with the ability to close the roof during rain or high wind.



42-VCU2-24

### **VENT CONTROL UNIT**

The Vent Control Unit (VCU) provides control for a single greenhouse zone utilizing sidewall ventilation with up to two unit heaters. The VCU includes a transformer that powers and protects your 24-volt DC vent drive motors.



Advancing Alternatives' innovative remote access and control platform, AdvanSync, offers remote control for your greenhouse, enabling users to conveniently and efficiently manage their greenhouse operations from any location. The platform features a user-friendly interface that allows for easy monitoring of temperature, humidity, wind, and rain, with the ability to adjust settings or manually operate systems – all from a mobile device or PC.

An online environmental control platform featuring real-time monitoring, asset control, setpoint adjustments, data tracking, and critical alarm notifications. Experience intuitive control and comprehensive oversight on any device.



#### Features:

- Long-range wireless connectivity from multiple controllers to Gateway Hub
- Intuitive user online interface allows for both a broad view of multiple zones and a narrow view of a single zone
- Create custom alarms based on grower's preferred climate
- Build an employee hierarchy of staff, manager, and admin-level users with different permissions and alarm settings for each level
- Track data from every controller



# UL-CERTIFIED CONTROL PANELS

## GREENHOUSE AUTOMATION & CONTROLS

Our new in-house capability to design and build UL 508A industrial panels for greenhouse environmental controls allows us to offer a comprehensive, all-in-one solution for your automation needs.

An ideal choice for schools, universities, and public garden centers, our UL-certified panels are engineered to minimize electrical hazards such as short circuits, overloads, and component failures.

Our UL 508A panels simplify approvals for inspectors and buyers by adhering to CSA, NEC, OSHA, and local codes, eliminating costly redesigns and ensuring seamless integration into commercial horticulture facilities. Whether managing irrigation, lighting, or ventilation, our panels offer a compliant, future-proof solution.



# LOW VOLTAGE ELECTRIC MOTORS

When it comes to greenhouse automation, we understand your need for a reliable motor. Our line of low voltage motors (LVMs) is specially designed to meet the unique power demands of ventilation systems installed in a greenhouse or agricultural building.



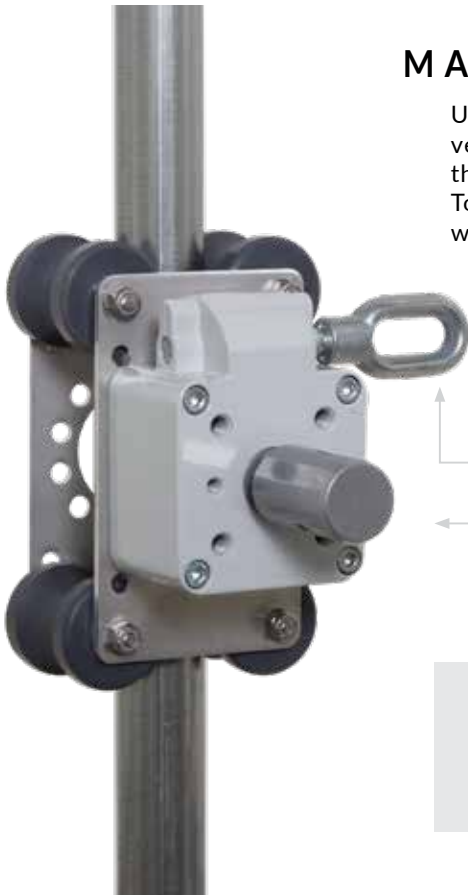
LVM100  
**100 NM LOW VOLTAGE MOTOR**



LVM180  
**180 NM LOW VOLTAGE MOTOR**

# MANUAL OPERATORS

Using a manual gear drive is the entry-level introduction to natural ventilation. We offer a range of gear ratio and output configurations that are easily operated by hand or battery drill input cranks. To determine which operator will best suit your needs, visit our website or contact our experts directly!



## GEAR CRANKS WITH INTERNAL BRAKES & GUIDE WHEELS

Be sure to check out our Guide Pipe selection for your manual operator

Roll Bar Adapters in multiple sizes

Check out all of our operator and guide pipe options at

***[advancingalternatives.com](http://advancingalternatives.com)***



GC15-1

### GEAR CRANK 15:1 WITH GUIDE WHEEL

#### Available Options:

- Traveling with guide wheels
- Stationary with mounting plate
- Dual output only



GC13-1

### GEAR CRANK 13:1 WITH GUIDE WHEELS

#### Available Options:

- Traveling with guide wheels
- Stationary with mounting plate
- Single or Dual output available



# CULTIVATION HAND TOOLS

We offer a wide selection of cultivation hand tools, including Kwazar sprayers, Metallo pruning tools, and Towa gloves. Our goal is to provide the tools you need to achieve your growing goals—whether you're managing a commercial greenhouse or planting in your backyard. Each product we carry is carefully selected for its quality and affordability, ensuring you get the best garden tools at a price that fits your budget.



## PRUNING TOOLS



### *Metallo Red Line Series & Silver Line Series*

Perfect for precision trimming, Metallo® ergonomically designed shears are built to meet the needs of both professional users and quality-conscious consumers. Paired with our loppers—offered in various lengths to handle both small and large jobs—you'll experience easier cutting with reduced hand and wrist strain.



## GLOVES



### *Available in various materials, patterns, and sizes — including kids!*

TOWA® gloves combine comfort, durability, and superior grip with innovative MICROFINISH® coating technology. Designed for a wide range of tasks—from heavy-duty industrial work to gardening and home projects—they offer excellent protection and control in any condition. TOWA® delivers reliable performance for professionals, hobbyists, and even young helpers.



# SPRAYERS



*Kwazar®*

Our family of greenhouse sprayers is designed to promote the protection and health of your plants, whether in the greenhouse or around the home. A wide range of models with varying capacities allows you to match the sprayer to the specific needs of your task.

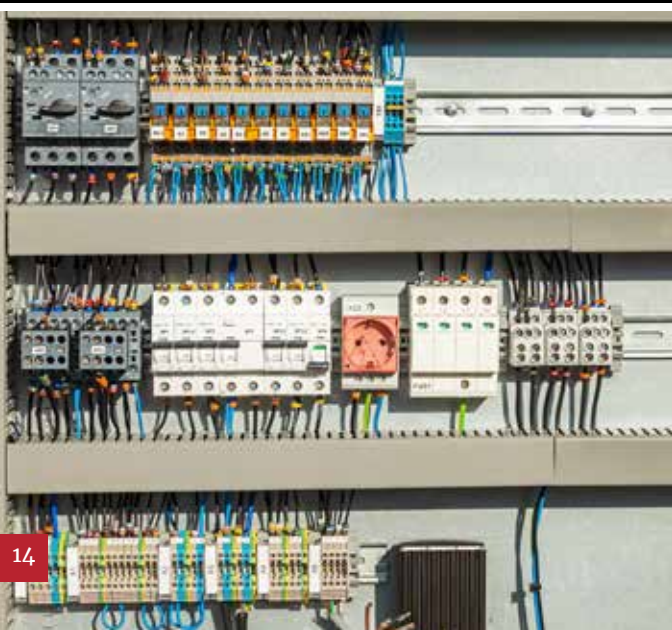


# CONTACT US ABOUT YOUR CUSTOM PROJECTS

Advancing Alternatives understands that no two greenhouse projects are the same. Because there are so many greenhouse types, styles, and uses, we are often asked to develop custom solutions based on the specific greenhouse needs of our customers. If your project requires a creative approach, call or email us. We are here to advance your ideas.

“Navigating my first winter with a greenhouse was a challenge, but the customer support team at Advancing Alternatives made all the difference. They were incredibly patient and helpful, guiding me step-by-step to get my fans and heating unit working seamlessly. Their assistance truly went above and beyond, extending even to issues outside their own equipment.”

**TRACY RUDNICK**  
*Mahwah, NJ*





# REQUEST A FREE QUOTE

We're excited to work with you! For a free "no obligation" quote on your next greenhouse, nursery, or livestock project, simply visit our website and submit a request.

Our experienced team of experts is happy to help you put the project of your dreams together.

Whether you need a few products or an entire greenhouse system, we are ready to assist you in every way possible.



## ADVANCING ALTERNATIVES

*Providing innovative solutions  
since 1997*

From greenhouse systems and solutions to quality garden tools, we have the products you need to make your operation or project a success!

[advancingalternatives.com](http://advancingalternatives.com)



**Innovate. Grow. Advance.**  
*advancingalternatives.com*

877-546-2257 | [sales@advancingalternatives.com](mailto:sales@advancingalternatives.com)

Lancaster County, Pennsylvania

