



ADVANCING
ALTERNATIVES

CLD-2MO Controller Interface Box with Timer and 2 Manual Overrides

Installation and user reference guide



Read instruction completely before beginning your installation. Familiarize yourself with this unit and compare what you received with these instruction.



Always wear eye and ear protection. Always use gloves and other necessary safety equipment. Metal can be sharp, handle carefully to avoid injury.



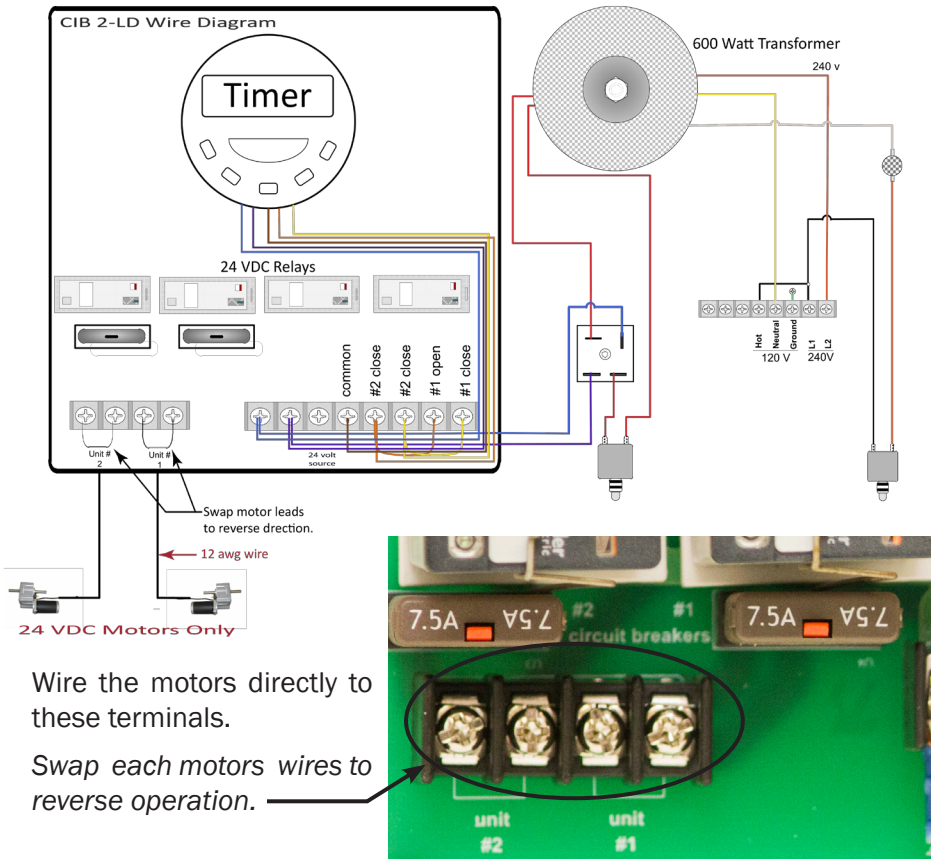
Qualified electricians should provide all electrical installations.

For Technical Support:

1-877-546-2257

support@advancingalternatives.com

Wiring Information



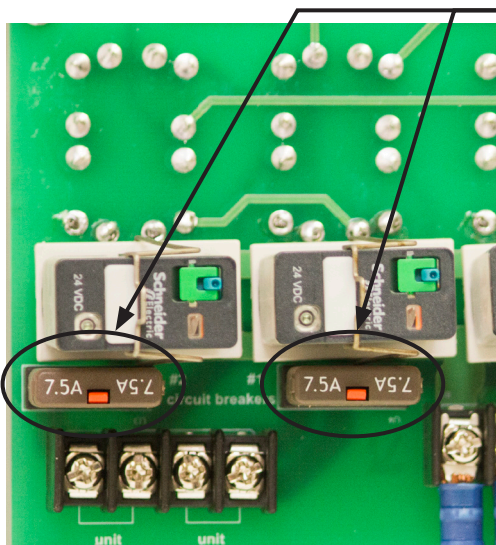
Wire the motors directly to these terminals.

Swap each motors wires to reverse operation.

This box powers and controls 24VDC curtain motors. You are able to manually operate the curtain with the switches on the lid, or operate the motor by setting the timer controller.

This unit is designed to run only 1 curtain at a time for the best performance. The transformer is rated for 600 watts at 35% cycle duty.

When you are connecting the motors to this box, use 12 AWG wire and keep the motor wire shorter than 200 feet.

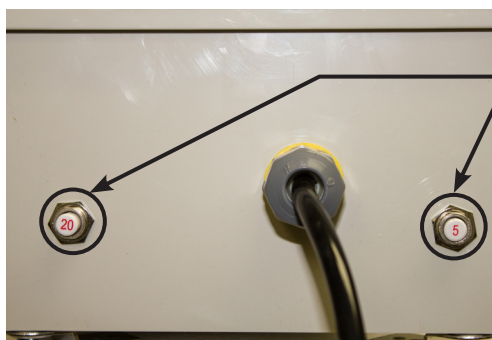


There are 4 circuit breakers in this box. They are designed to give protection from overloads.

When a breaker trips a tab pops out of the breaker; check curtains for any mechanical or electrical issues or obstructions. Then press the tab back into the breaker to reset.

Two of these breakers are on the circuit board. Each protects one motor. If one breaker trips, the other unit will function.

Note: The breaker may not connect immediately after being reset. The breaker needs to cool to resume operation.



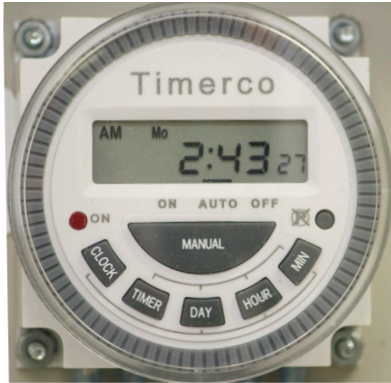
The two circuit breakers on the bottom of the box protect the transformer. If either one trips, there will be no power to any units.

Maximum Breaker Requirements:

60 Nm to 100 Nm motors require a 5 amp circuit breaker.

Over 100 Nm - 180 Nm motors require a 7.5 amp circuit breaker.

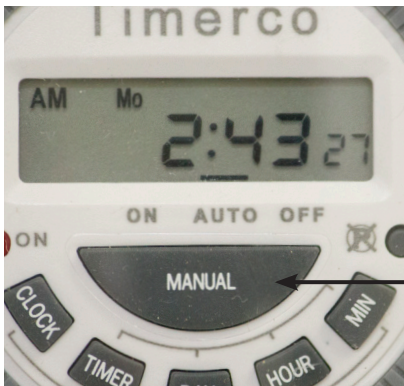
Using and Setting the Timer



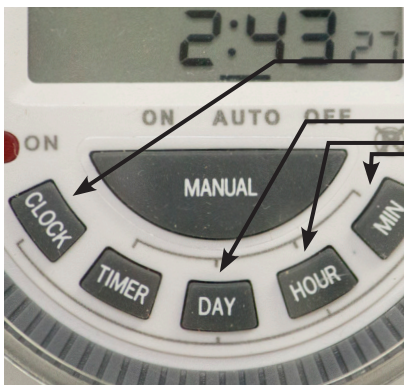
This timer controls the opening and closing of your curtain.

You set the desired times that you want to automatically operate the curtain.

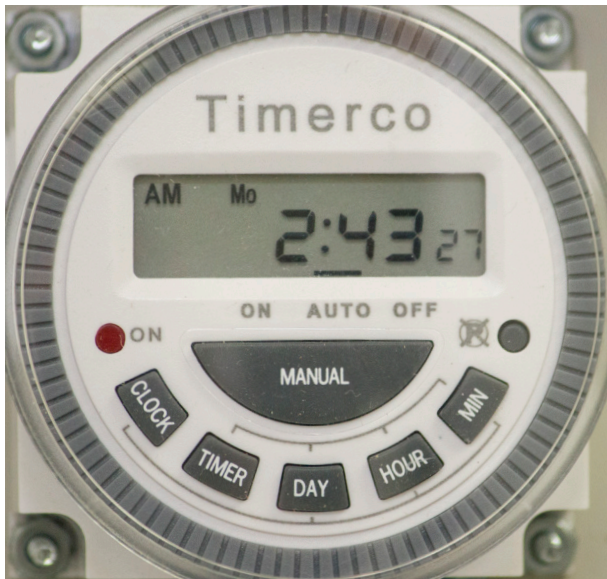
You can set up to 8 periods for each day. The timer also has a manual override.



When pressed the manual override button cycles between the On, Auto, and Off functions of the timer. In order for the timer to open and close your curtain during the preset time periods it must remain in Auto.



To set the day or time press and hold the “Clock” button. Then select the Day, Hour or Minute button to make the necessary changes.



You have 8 periods in a day to set your curtain operation. This will allow you to run 8 complete cycles each day.

To set periods to open and close the same time each day press the Timer button and then press the day button. All days of the week will be highlighted at the top of the screen. To set individual times for each day simply hit the Day button again and cycle to the specific day of the week you want to change.

Press the Timer button to select period 1, On time. Set the desired time by pressing the hour and minute buttons. Once time is set press the Timer key again to set the Off time. Once again press the hour and minute button, when time is set hit the timer button again. Repeat the steps above to set Periods 2 - 8. If you do not want to set other times during the day hit the clock button and the timer will return to clock mode.