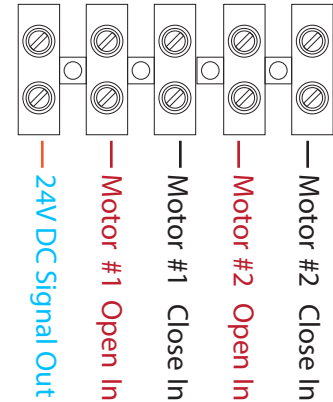


Automation Control Signals



All connections to the environmental control must be made to dry contacts!

42-CIB2-24MO

Manual Motor Control

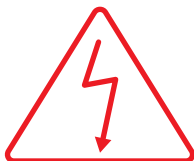
Set mode switches to "Manual"

Operate motors by moving control switches to "Open" or "Close"

Remote Motor Control

Set mode switches to "Auto"

Motors operate when 24V DC "Open" or "Close" signal is returned from the external environmental control.



All electrical connections must be made by a qualified, licensed electrician and in accordance with all state and local codes.